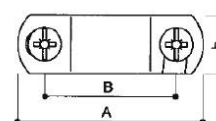
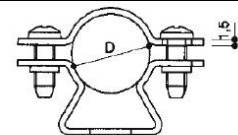
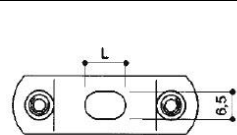
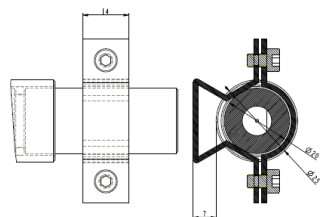


N° LED	W/mt	Lm to the light source				R / V / B		
060	15	-	24V	IP65	DIFFUSE	-	RGB	- - -
140	15	1800	24V	IP65	DIFFUSE	-	-	2700K 3000K 4000K

	Model	Dimensions 50 x 31 x L mm
	On wall/ceiling/floor Shield Led Bar, maximum size 50mm X 31mm. Finish: grey anodized aluminum, other colors on request. Protection screen: transparent polycarbonate. It is provided with 1m bipolar neoprene cable for the electrical connection. Maximum length 1150mm. Indoor/outdoor installation on any rigid surface by suitable brackets. Fixing with screws suitable to the support with 6mm diameter, not supplied by us.	



Dimensions mm	D mm	A mm	B mm	L mm	b mm
19 - 21	21	50	37	10	14

Parallel electrical connection 24V Polarity: RED cable + BLACK cable -	ONLY FOR 24V RGB Connection to the pilot module	Connection: Connector compliant with EN 60998-2-1	
	Negative = red Negative = blue Negative = green Positive = black	(FACSIMILE) Indoor connector 	(FACSIMILE) IP68 connector for example Steab Paguro 5664 or similar

ATTENTION: Before starting all electrical connections, make sure that the power supply is not in voltage. If this simply rule is not respected, the lighting source will be irretrievably damaged.

	Compliant with European standards (EMC, RoHS, Ecodesign and requirements specified in the Low Voltage Directive (LVD))	CLASS III Operating with SELV	POWER SUPPLY By remote power supply SELV OUTPUT 24Vdc constant voltage / Only for 24Vdc RGB version, please see the connection to the pilot module		Separate waste collection of electric and electronic equipment	Made in Italy Projected, manufactured and assembled in Italy
--	--	---	---	--	--	--