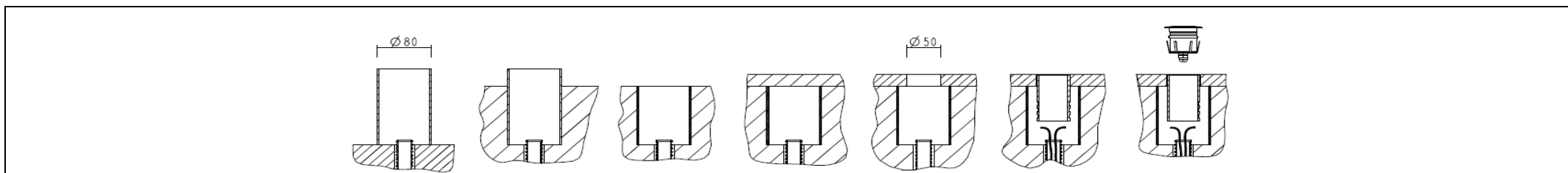


N° LED	W	Lm to the light source				R / V / B		
03	3.6	330	350mA	IP65	DIFFUSE - 7° - 25° - 40°	-	-	2700K 3000K 4000K

Model	Description	Dimensions Ø55 x 70mm	Formwork for fixing: Ø50xØ42x80mm
	<p>Recessed floor Led light body in aluminum and stainless steel. It is provided with 50cm neoprene cable for the electrical connection. Indoor/outdoor installation on the floor with specific formwork. Pressure fixing with compression springs and OR, depth dimension 80mm.</p>		



<p>Series electrical connection 350mA SELV. Polarity: Red cable + Black cable -</p>	<p>IP68 connector for example Steab Paguro 5664 or similar. Connector compliant with EN 60998-2-1 standards</p>
	<p>(FACSIMILE)</p> <p>Connection to be made in a watertight place</p>

ATTENTION: Before starting all electrical connections, make sure that the power supply is not powered. If this simply rule is not respected, the lighting source will be irremediably damaged.

<p>Compliant with European standards (EMC, RoHS, Ecodesign and requirements specified in the Low Voltage Directive (LVD))</p>	<p>CLASS III Operating with SELV</p>	<p>POWER SUPPLY By remote power supply SELV OUTPUT 350mA constant current</p>	<p>Separate waste collection of electric and electronic equipment</p>	<p>Made in Italy Projected, manufactured and assembled in Italy</p>
------------------------------------------------------------------------------------------------------------------------------------------	-------------------------------------------------	------------------------------------------------------------------------------------------	-----------------------------------------------------------------------	--------------------------------------------------------------------------------